



*David Slater (Secretary), John Fogarty and The Most Revd John Wilson, Archbishop of Southwark*

## Another Archbishop...

Dover is getting a reputation for visits by Bishops & Archbishops. On 13<sup>th</sup> October the new Roman Catholic Archbishop of Southwark, John Wilson, came for David's 'whistle-stop morning in the Port'. He was accompanied by his Secretary and the CEO of Stella Maris (the Catholic Mission to Seafarers). Our two Catholic Chaplains, John & Mike, were able to show what they do when visiting ships.

The morning started in our offices, in the Eastern Docks, talking about KWM and the chaplaincy as a whole. This was followed by a brief time of prayer on the sea front (dodging the rain) before heading to the offices of the Harbour Board. We had a meeting with the CEO of the Harbour Board, the day after he had been in Westminster with a Parliamentary Committee.

We then went on to the Cargo Terminal where John & Mike took Archbishop John (in full safety orange, hat & boots) onto the Manisa Balu - a General Cargo vessel that was unloading a cargo of steel. It meant the Archbishop could see the reality of life for the crew working onboard for long periods, often over 9 months away from home.

The visit continued to the RNLI. We chatted to some of the crew about the migrant situation and the vast amount of work their volunteers have been doing.

The morning finished with a quick drive through the Cruise Terminal. We were able to show the war memorial where the Port Remembrance service will take place in November.

*David Slater (Secretary)*

# New beginnings

## From our Administrator:

I am delighted to have joined KWM supporting the very worthy ministry of Chaplaincy in the workplace. As we spend about a third of our lives at work, it seems only right to me that we, not only take care of our emotional and physical selves, but our spiritual selves too.

I have lived in Kent with my family for over 15 years within the Parish of Our Lady of Mount Carmel, Faversham.

I started my working life in teaching and then worked in accounts and administrative roles for several years. Along with my position at KWM I work part-time as a birth Doula and for the National Childbirth Trust as an Antenatal Facilitator; supporting parents-to-be as they bring new life into the world.

I'm relishing the role with KWM and getting to know you all and hoping to meet you in person before long.



*Madeleine Shepley*

## Port Remembrance Service

The War Memorial in the old Marine Station – now Cruise Terminal One – remembers those lost in two World Wars by the South-eastern and Chatham Railway and its successors. The memorial is unusual as it records more people killed in WWII than the Great War.



The Remembrance Service, on 9<sup>th</sup> November, led by David as Port Chaplain, is a joint Railway/Port event with Chief Executives of the Port, South-eastern Railway plus chaplains from the Railway Mission and the Royal British Legion.

The event is very significant for those locally, especially for those who had families involved.

The bishop of Dover preached to a congregation of 150. It was exactly 100 years ago that her predecessor blessed the unveiling of the memorial.



After the main service a wreath was laid at the stone marking the place the Unknown Warrior was brought home, and the Last Post was played by cadets from the Duke of York's Royal Military School – whose predecessors had proved the honour guard for the Unknown Warrior in 1920.

*David Slater (Secretary)*

# New Retail Chaplaincy opens in Ashford, Kent

This December marks the official beginning of a chaplaincy project at the McArthur Glen Designer Outlet in Ashford (some of you may have visited it over the years). Following a significant expansion in 2020 the centre now comprises 85 stores and 14 restaurants, with around 1,500 staff. A high proportion of these are local people, meaning that the Outlet is one of the major employers in the town.

## *Churches Together in Ashford*

Following initial contact with David Slater and Mark Ball of KWM in the summer of 2020, the leaders' fellowship of Churches Together in Ashford began considering what it might mean to establish a chaplaincy at the Outlet. Then in April 2021, Archbishop Justin Welby came to Ashford for a Holy Week pastoral visit.



As part of this, a meeting was set up with the Senior Management of the Outlet, including representatives from KWM

and local churches. The group went expecting to have to advocate their cause and justify the need for a chaplaincy presence but were amazed to find an open door from the management team! They were aware of the

benefits of this form of ministry, and said in effect, 'When would you like to start?'

## *Four Volunteer Chaplains*

Since then, a small group of 4 volunteer chaplains has been recruited from local churches and received basic training on site. This has included visiting some of the stores, where the reception has been very positive. With the necessary Service Agreement and other documentation now in place, we are all set to go live as this newsletter goes to print and in the important run-up to Christmas. It's a low-key start, with a 6-month trial period to see how it all works out.

## *We would greatly value your prayers:*

For the volunteer team of 'Ashford Outlet Chaplaincy' (who will be co-ordinated by the new KWM Lead Chaplain, and each will give a morning or afternoon per week/10 days)

For the Outlet staff and management as this new venture gets under way

For good relationships to be established, along with mutual trust and understanding

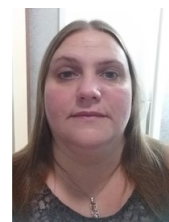
And for the opportunity to be a much-needed Christian presence in the workplace of so many people. Thank you.

*Rob Sylvester*

## Meet the Team:

**Claire Bracegirdle, Kevin Taylor**

**Sophie Carnaby & Diana Hope**



## God and the Popeye Moment

During His ministry, Jesus pointed out that He came that people may have life and have it to the full (*John 10:10*)

Catherine Booth, wife of William Booth founder of the Salvation Army, said that 'If we are to better the future, we must disturb the present'.

### **'That's all I can stand, I can stand no more'**

As a child I used to watch Popeye cartoons. The storylines often involved Popeye with his girlfriend Olive Oil and his adversary Bluto. Bluto would try to win Olive Oil's affection through foul means; at which point Popeye would say 'That's all I can stand, I can stand no more'. He'd open a can of spinach, eat the contents, and come to her rescue.

This has been referred to as a '**Popeye moment**'. A time when God puts in the heart of his people the need to make a difference, by disturbing the present. I am reminded of past moments such as William Wilberforce and others' campaign against slavery and Lord Shaftesbury's campaigns for reforming factories and against child labour.

## Weekly Fellowship

Wednesdays, 10.00am-11.00am on Zoom

We really look forward to you joining us some time to share with us in an engaging hour of reflective bible study and supportive prayer for the work of KWM. For joining details email:

[admin@kentworkplacemission.org](mailto:admin@kentworkplacemission.org)

### **The Match girls of the Bryant and May Factory**

The Booths campaigned on behalf of the match girls working at the Bryant and May factory at Bow who were underpaid, over-worked, and



worked with dan-

gerous phosphorous which resulted in a fatal disease. They lobbied the factory to use safe materials and when this was not forthcoming, opened their own factory paying workers fairly and treating them well. This was successful and helped change working practices at the Bryant and May factory.

### **Keep Chaplains in your prayers**

Please remember Chaplains in your prayers, at this time, that they will have wisdom and discernment in their conversations with staff and management, and for both Chaplains and Trustees that God will inspire us with ideas that can change the workplace for good.

*Paul Buckley (Trustee KWM)*

# Resources for Mission

If you are reading this, you are probably a member of Kent Workplace Mission or linked with one of its sponsoring bodies. Like a number of faith-based organisations - but unlike nearly all others - we don't charge you a membership fee. We are glad to have your prayer support and interest regardless of your financial circumstances.

But you will have noticed that no organisations you are linked with can function without some resources. If you want to employ staff to raise your profile and further your objectives in a dedicated and professional way, they need to be paid. KWM is a lean operation but, as we seek to appoint a new Lead Chaplain and supply a new half-time paid chaplain at the Bluewater Centre, our costs will rise again.

In the short term, we have the resources to cover the costs we are taking on. But a quick glance at our accounts (available in full to anyone who wants to see them) shows that currently we are heavily dependent on just three funding sources: the owners of Bluewater, the Anglican Diocese of Rochester and the United Reformed Church Southern Synod. Between them these three provided 90% of our income last year.

To be secure financially beyond the short term and to be in position to take up the new opportunities that are stacking up in an encouraging way, we need a broader income base. I would therefore like to encourage you to consider a financial donation to KWM. A gift of £20 a year from each of our members would make a marked difference. An annual donation of £100 from even one in ten of the churches around Kent would also make a marked difference.

Should you wish to give this sort of support to complement your prayers for the work of KWM, the bank account details are:

<b>Bank:</b>	<b>Co-operative Bank</b>
<b>Account Name:</b>	<b>Kent Workplace Mission</b>
<b>Sort Code:</b>	<b>08-92-99</b>
<b>Account Number:</b>	<b>67250204</b>

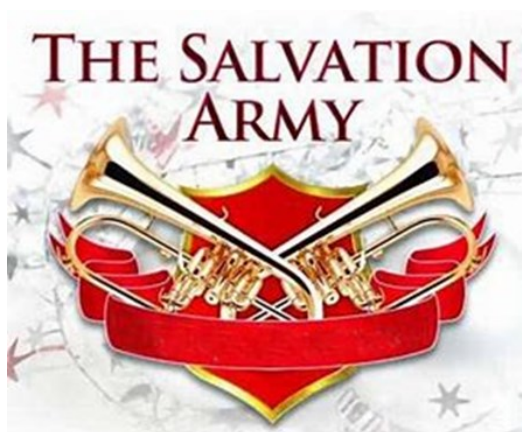
Alternatively the office can receive and process cheques.

Thank you for your support for KWM. If you are able to increase the resources we have and so increase our mission impact, then a double thank you.

*John Ellis (Vice-Chair)*

# Joy to the World, the Lord has come!

As a member of The Salvation Army, you won't be surprised when I tell you that I love singing all, well most, of the Christmas carols. For many, Christmas begins once they have heard a Salvation Army band play a carol. We enjoy playing the music and are deeply grateful for the generosity of the public that supports our work.



Whilst of course some of the carols paint a less than accurate picture of what happened on that first Christmas morning, the Nation's favourite carols do help us to share the good news story of a Saviour for the world:

'Peace on earth and mercy mild, God and sinners reconciled'

'The hopes and fears of all the years are met in Thee tonight'.

'Word of the Father, now in flesh appearing'

And my personal favourite:

'With the dawn of redeeming grace, Jesus Christ is here'.

For many, when they sing these words, it is not about the theology they express or whether they believe them to be true, but the reality that we don't usually sing carols alone. We are with family, friends, enjoying nativity services, together, as we sing.

One of the deep purposes of KWM is to ensure that people from all walks of life, in whatever their circumstances, don't feel they are alone. As we serve God through serving others, we continually surprise ourselves by a timely encounter with someone in a moment of crisis or need and somehow God uses us to fulfil his purposes. Thank you for this important ministry.

God is with us! That's the reminder of Christmas. So, come on, clear your throat and let's sing together:

'Joy to the World, the Lord has come. Let earth receive her King'.



God be with you and bless you.

*Major Mark Herbert  
(Trustee KWM)*

# Advent Reflection

[John 1:14](#)

*"The Word became flesh and made his dwelling among us."*

As we journey through the season of Advent, towards the celebration of Christmas, there is so much contained in the familiar verses which open the Gospel of St John and which are frequently read at this time and often culminate in the verse quoted above.

Philippians 2 reminds us that the Word becomes flesh because Jesus, not grasping equality with God makes himself nothing, taking the nature of a servant. Incarnation happens because Jesus releases His rights to live amongst us.

In chaplaincy we model and reflect that. In shopping centres and power stations, in docks and council offices, in High Streets and care homes we are where the people we serve are. As we remember how Jesus entered our world so we have the privilege of entering the world of work and employment.

Like Jesus we need to let go of things which may feel important to enter our chaplaincy worlds. We gift time and talent generously, we serve flexibly, we love, support and care sacrificially.

May we learn from Jesus this Advent and Christmas as He models to us something helpful about the nature of our calling.

Be blessed as you serve and support the mission and ministry of Kent Workplace Mission.

*Andy Wooding Jones (Chair of Trustees)*



May God bless you with  
love, joy and peace this  
Christmastide

With blessings from  
all at Kent Workplace  
Mission

# Trustees and Office Holders

KWM is a Local Ecumenical Partnership being a mission partner of Churches Together in Kent, and so has trustees from the partner denominations, as well as trustees representing the membership. Trustees are appointed, and officers elected, annually.

## Denominational Trustees

### Rochester Diocese

Ven Andy Wooding Jones and Ellen Couzens

### Canterbury Diocese

Revd Dr Jonathan Arnold and Ven Andrew Sewell

### South East Baptist Association

*two vacancies*

### Archdiocese of Southwark

Revd John Letley and Revd Michael Dale

### South East Methodist District

Revd Helen Hollands and Revd Naomi Oates

### South East Division Salvation Army

Major Mark Herbert and *one vacancy*

### Southern Synod United Reformed Church

Richard Blackwell and John Ellis

## Members' Trustees

Paul Buckley

David Slater

Alan Wood

## Officers

### Chair

Ven Andy Wooding Jones

### Vice-Chair

John Ellis

### Secretary

David Slater

### Treasurer

Alan Wood

# Contact

 [kentworkplacemission.org](http://kentworkplacemission.org)

 [admin@kentworkplacemission.org](mailto:admin@kentworkplacemission.org)



Registered Charity No. 1105783